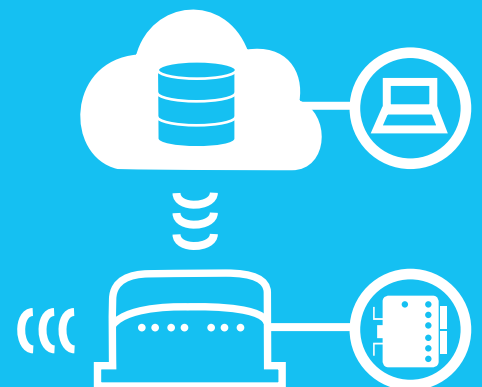


MetroCloud™



Connect MetroMail™ to the Cloud

- Simple, value priced WWAN M2M IP connectivity
- Automatic connection monitoring and error recovery
- Secure, redundant firmware and configuration images
- Unique software and hardware configuration flexibility
- Automatic provisioning of custom middleware



MetroCloud™

Simple, value priced WWAN M2M IP connectivity

The MetroCloud M2M Gateway from Metropolitan Industries, Inc. provides competitively priced LAN to WWAN routing and GPS functionality in a single basic unit certified on all major US cellular operators (AT&T, Verizon, Sprint, T-Mobile) (CDMA/EvDO and WCDMA/HSPA+). The MetroCloud is simple to configure locally or remotely from your PC, tablet or smart phone.

Reliable and secure

MetroCloud automatically resolves common problems associated with wireless M2M connectivity.

Built in software and hardware watchdogs continuously monitor each component of the product and the product's connectivity to home servers. In the event an issue is detected, the product pro actively takes steps to re-establish connectivity. All software and configuration images are protected with digital signatures and have dual rollback images that allow the product to revert to previous working settings if an issue is detected.

All management functions are protected by certificate and/or password based security mechanisms and all management actions take place over hardware assisted encrypted links.

Flexible and cost effective to integrate and deploy

MetroCloud provides unique flexibility that allows customers and system integrators to tailor the product to their solution or even site specific requirements.

MetroCloud incorporates two hardware expansion slots that allow the MetroCloud to be enhanced with additional radio and/or wired interfaces. The expansion cards are simple and quick to install, allowing the field upgrade of the device when new functionality is required.

An 802.11abg Wireless LAN Access Point and Client Accessory Card is available from Metropolitan Industries, Inc. and all the design details of the expansion card are available to partners allowing you to add value with your own hardware products.

MetroCloud also allows simple integration and provisioning of customer or system integrator middleware and applications on the device. The automated cloud provisioning system means that each device can be set with its own custom configuration and image that is automatically loaded from the cloud when it initially connects to the Internet.

Summary

The Metropolitan Industries, Inc. MetroCloud M2M Router has the basic, simple to use functionality for most applications along with the unique flexibility for meeting specific requirements that makes it the ideal choice or use with your solution. As part of the continual product improvement process Metropolitan Industries, Inc. reserves the right to alter the specifications of this project.

©2013 Metropolitan Industries, Inc.. Metropolitan Industries, Inc. and the Metropolitan Industries, Inc. logo are registered trademarks of Metropolitan Industries, Inc.. All third-party trademarks are property of the respective owners. Mailing Address: 37 Forestwood Drive, Romeoville, IL 60446 Phone: Local (815) 886-9200, National (800) 323-1665

Features	Sub Features	Descriptions
WWAN modem	Supported frequency bands	<ul style="list-style-type: none"> GSM/GPRS/EDGE: 850/900/1800/1900 MHz UMTS/HSDPA/HSUPA/HSPA+: 800-850/900/1900/2100 MHz and AWS band (1700/2100 MHz) (B1, B2, B4, B5, B6, B8) CDMA 1xRTT/EV-DO rev0/EV-DO revA (GTM689 only): 800/1900 (BC0, BC1)
	Max. connectivity speeds	<ul style="list-style-type: none"> HSPA+: 14.4 Mbps (Cat 10) down 5.76 (Cat 6) up EV-DO RevA mode: 3.1 Mbps FL/1.8 Mbps RL HSPA+ Rel 7 SW features CPC (DTX/DRX), HS-SCCH-less operation, Enhanced CELL_FACH, Enhances L2, EF-DPCH
	Rx diversity	<ul style="list-style-type: none"> Simultaneous equalization and Rx diversity on all bands, except for GSM/GPRS/EDGE
	Connectors	<ul style="list-style-type: none"> 1 x SMA: WWAN Main 1 x SMA: WWAN Div/GPS
	Visual feedback	<ul style="list-style-type: none"> Seven 3 color LEDs showing system status & signal strength
GPS	Assisted/standalone GPS	<ul style="list-style-type: none"> Standalone GPS, assisted GPS, GPS OneXTRA™ Wideband GPS processing (20MHz) for improved measurement accuracy
CPU		<ul style="list-style-type: none"> ARM926EJ-S @ 450MHz
Ethernet (IEEE 802.3)		<ul style="list-style-type: none"> 10/100Mb/s RJ45 connector
SIM	USIM/SIM connection	<ul style="list-style-type: none"> USIM/SIM connection – Class B & Class C
Expansion slot 1 & 2		<ul style="list-style-type: none"> Expansion board for IO functions such as serial, USB, GPIO, WiFi
Power	DC Power in	<ul style="list-style-type: none"> 9-36 V DC
	Connector type	<ul style="list-style-type: none"> Micro-fit 3.0", dual row, 4 circuits
	Current consumption	<ul style="list-style-type: none"> Typical talk current (GPS off): 3G: 700mA (WCDMA 2100@ 23 dBm), 2G: 325mA (EDGE 850 PCL8) Typical standby current (GPS off): 3G: 1.7mA, 2G: 3mA Typical average GPS current (radio off) 80mA
Case	Specifications	<ul style="list-style-type: none"> 115 mm x 105 mm x 45 mm, 180 g
	Mounting	<ul style="list-style-type: none"> 6 through holes for M4 bolts - 2 x 2 compatible with VESA Mount MIS-D 75 (optional standard DIN rail mounting interface)
Environmentals	Operating temperature	<ul style="list-style-type: none"> -22° F to +158° F (-30° C to +70° C)
	Storage temperature	<ul style="list-style-type: none"> -40° F to 185° F (-40° C to +85° C)
	Humidity operational	<ul style="list-style-type: none"> 5% - 95% non condensing
Certification		<ul style="list-style-type: none"> FCC IC PTCRB
Standards compliance		<ul style="list-style-type: none"> ROHS, Reach



www.metropolitanind.com

Revised: April 13, 2015

1. Configure MetroCloud™ provisioning server.



2. Configuration & middleware are automatically installed.



3. Device is ready to connect MetroMail™ to the Cloud!

